

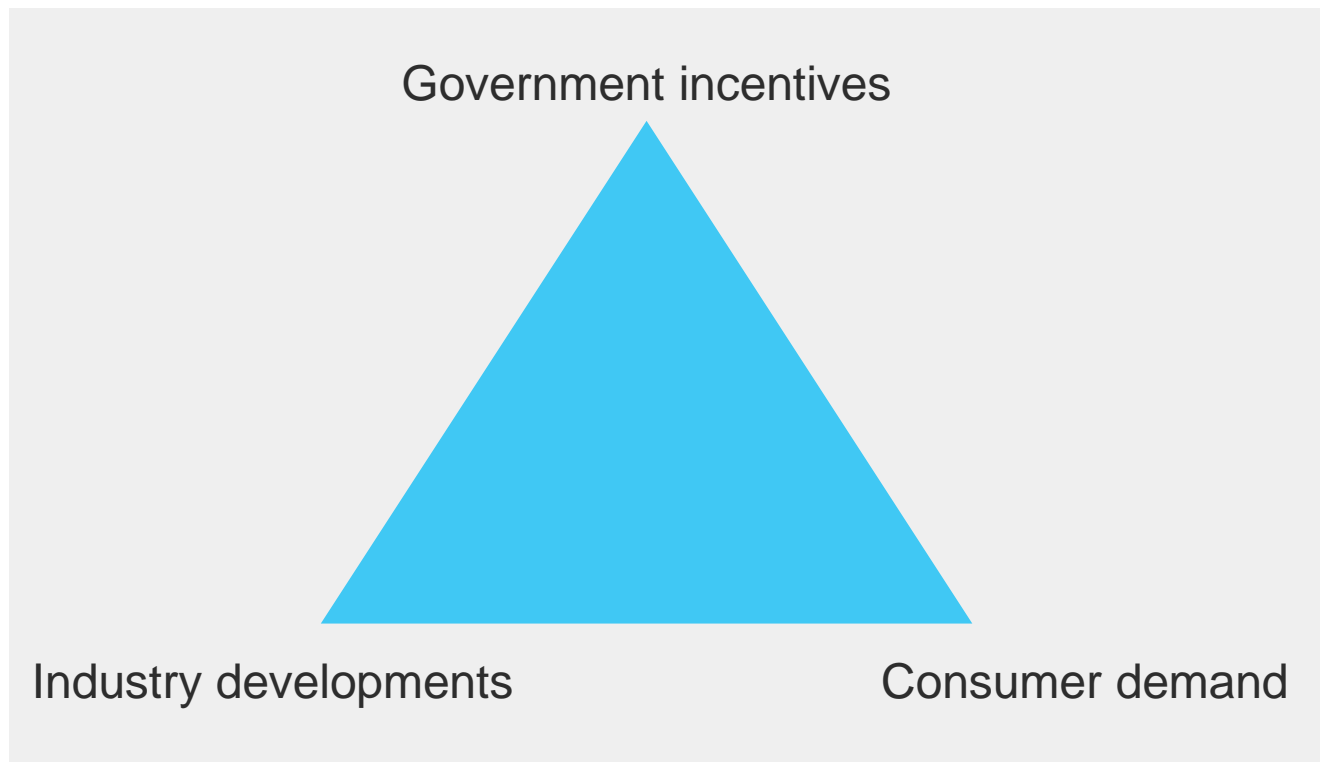


IRU Lighthouse for electric taxis

Cologne, 5 November 2016
7th IRU International Taxi Forum

iru.org

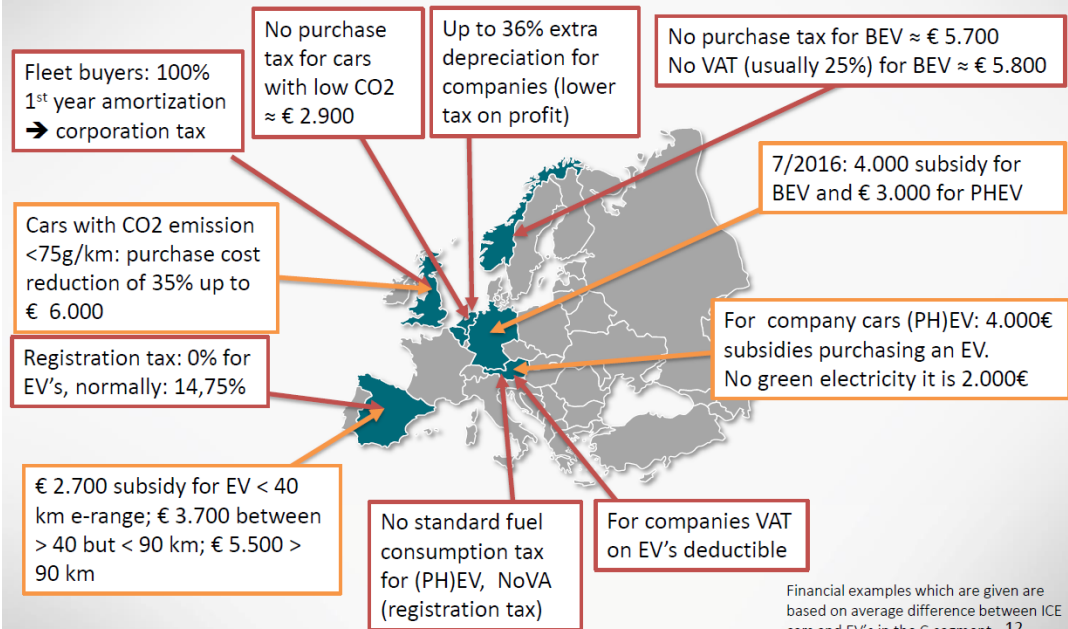
Deployment of electric vehicles



Current situation on electric-vehicles

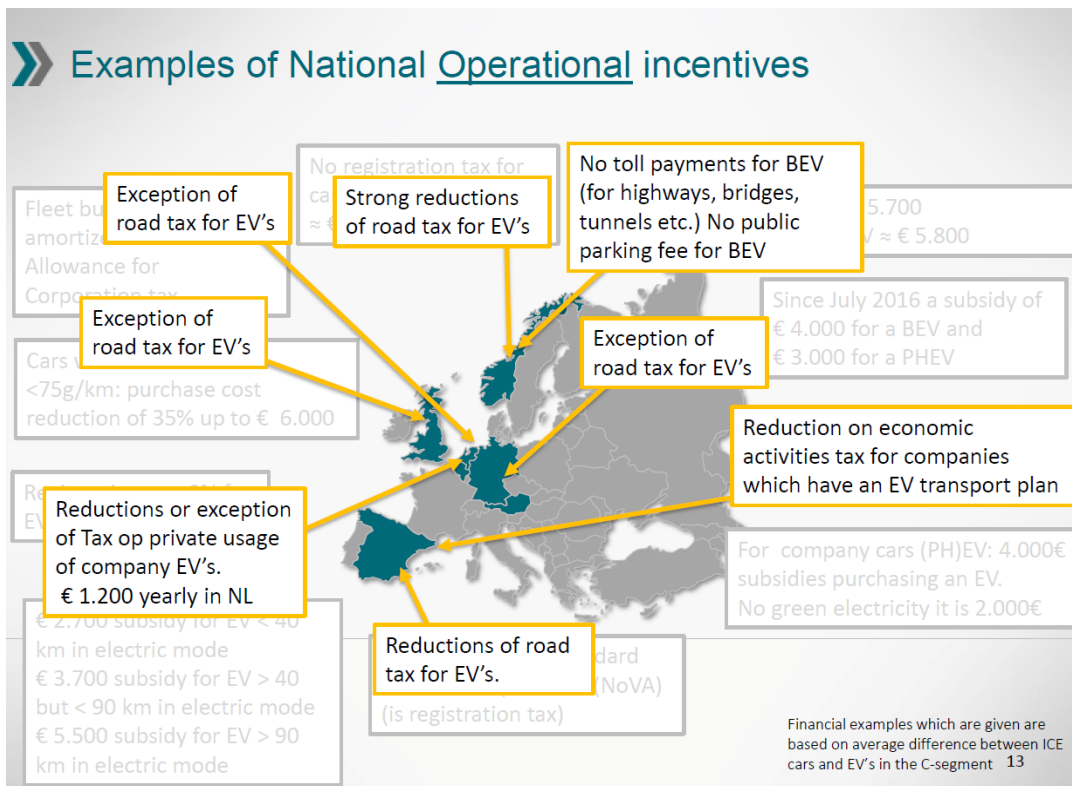
» Examples of National Purchase incentives

Tax break & Subsidy



I-CVUE project results

Current situation on electric-vehicles



I-CVUE project results

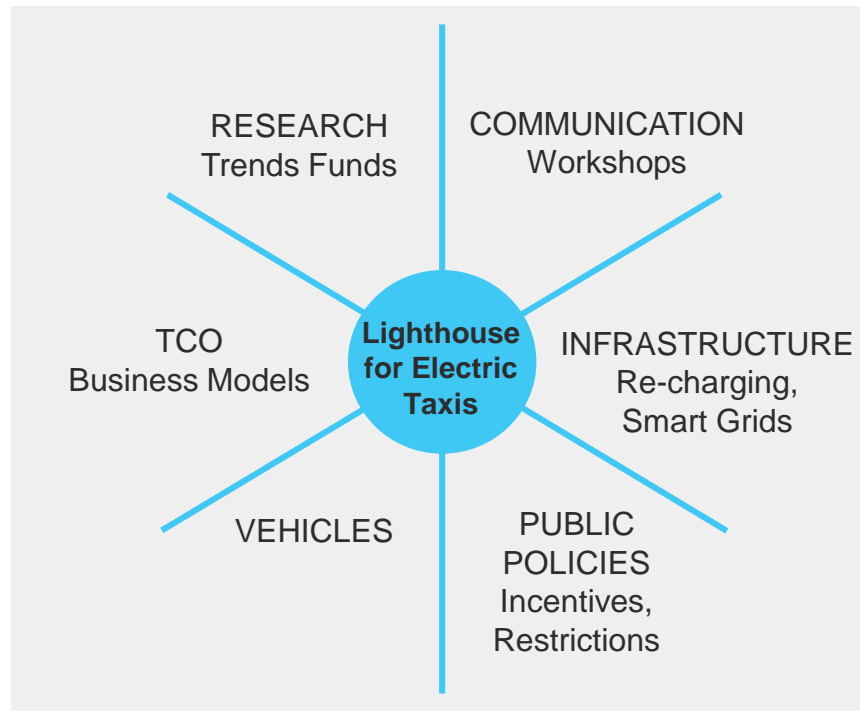
IRU Lighthouse for electric taxis

- An IRU initiative aiming at raising **awareness** and **knowledge** around **electric taxis** in order to be ready and lead and not be led by changes in vehicles, infrastructure and regulation
- The initiative aims at becoming a reference repository of studies and guidelines helpful to the taxi industry on their way to zero emission



IRU Lighthouse for electric taxis

- A **multi-stakeholder platform** to collect best practices, requirements, trends on technology and legislation with focus on the taxi sector
- The IRU Lighthouse for electric-taxis organizes workshops to support the adoption of electric vehicles and establish a constructive dialogue among different stakeholders
- The platform provides guidelines and useful references for deployment of electric taxis



IRU Lighthouse for electric taxis

- Start in Europe in the framework of I-CVUE project co-funded by IEE
- Launch in Cologne at the 7th IRU International Taxi Forum on 5th November 2016
- Start to extend globally from 2017

Recent activities

- Workshop on electric-taxis on 25 October 2016 in Antwerp



Lighthouse outcomes



- Dedicated section on IRU website (already launched)
- Platform for collaborative discussion
- Taxi forum
- Electric Taxis Roadmap

Activities

The IRU Lighthouse for Electric Taxis will:

- showcase best global practices on a dedicated section on the IRU website;
- provide a platform for collaborative discussion on the evolution of adoption of electric taxis;
- organise a dedicated Electric Taxi Forum once or twice a year with the possibility to present acquired knowledge and practices while debating about key relevant operational, business and technological aspects of their experience with electric taxis; and
- work towards the development of an Electric Taxi Roadmap.

Tell us what you think

With the objective to increasingly involve IRU members, tip-top partners and taxi operators, IRU would like to gather valuable information from taxi fleet operators on their experience on electro-mobility.

We invite you to fill in the on-line questionnaire and provide your contact details in order to be involved in future activities of the Lighthouse on Electric Taxis.



<https://gon.glt5a3e>

Contact information

For additional information please contact:
montica.guerra@iru.org or witlam.doncos@iru.org



Thank you for your attention

monica.giannini@iru.org

IRU IRE



IRU Lighthouse for ElectricTaxis
Facilitate the market uptake
of electric taxis

CONCEPT NOTE

Background

Taxi represents an essential element of passenger mobility by offering an alternative, safe, flexible and reliable service. Together with other forms of collective passenger transport, taxi, has an alternative alternative to private car usage. Consequently, taxi fleets contribute to reduction of road congestion, emissions, increased safety and increased mobility efficiency, both in growing number of electric taxis around the globe. One has currently closely follow and facilitate the market uptake of electric taxis globally.

Objective

In order to facilitate the market uptake of electric taxis and to support decision makers in assessing if electric taxis could fit their cities, the Lighthouse team is the best possible way and that of avoid for the best the the road situation. The IRU Lighthouse for Electric Taxis platform has released an of other and related experiences with electric taxis and provides a worldwide visibility to these different experiences.

Composition

The IRU Lighthouse for Electric Taxis should be composed of representative of a broad range of governmental and non-governmental organizations active in urban mobility, subject to the same principles and the meeting, objectives, service provision, representation of cities, territories, and protection of personal data. Potential partners will be selected in order to ensure that having the same understanding and behaviour for the collaboration, as a member of the IRU Lighthouse for Electric Taxis.

